

## G9003 Splined Rivet Nut

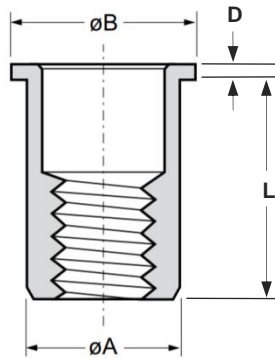
Stainless steel 304 · Large flange · Splined · Open end  
M3 - M10

### Features

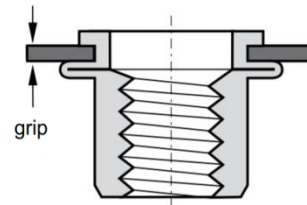
- Designed to provide load bearing threads in thin sheet materials
- Splined body improves torque-to-turn resistance in softer materials such as aluminium when compared to plain body inserts and improves electrical continuity in sheet metal fixings
- Double diameter body and lead-in chamfer provide easy insertion into hole
- Large flange head provides a load bearing surface and reinforces the hole to prevent push-out

### Material

- Stainless steel 304, natural



Before Placement



After Placement

Part No.	Thread Size	Grip Range		Hole Size +0.1 / -0	$\phi A$ max.	$\phi B$ +0 / -0.5	D $\pm 0.1$	L $\pm 0.3$
		min.	max.					
G9003-2314	M3 x 0.5	0.3	2.0	5.0	5.0	8.0	0.8	9.0
G9003-2415	M4 x 0.7	0.3	2.5	6.0	6.0	9.0	1.0	11.0
G9003-2417		2.5	4.0					12.5
G9003-2517	M5 x 0.8	0.3	3.0	7.0	7.0	10.0	1.0	12.0
G9003-2520		3.0	4.5					13.5
G9003-2621	M6 x 1.0	0.5	3.0	9.0	9.0	12.0	1.5	14.0
G9003-2623		3.0	5.0					16.0
G9003-2822	M8 x 1.25	0.5	3.0	11.0	11.0	15.0	1.5	16.0
G9003-2825		3.0	5.5					18.5
G9003-2028	M10 x 1.5	1.0	3.5	13.0	13.0	17.0	2.0	19.0
G9003-2031		3.5	6.0					21.5



### Can't find what you are looking for?

We can provide unique and customized solutions.  
Contact your nearest [Gripwell](#) team for assistance!